

**BREATH EASY**  
Bright sunny skies and low humidity today, with highs near 80; clear tonight.  
Forecast, B6

# The Providence Journal

**TUESDAY**  
AUGUST 14, 2007

**50¢**  
\$2.40 per week by carrier

projo.com

## Fire code may be relaxed

Changes sought by some businesses that failed to win the approval of the General Assembly may be implemented by the state fire marshal.

BY MARK ARSENAULT  
JOURNAL STAFF WRITER

PROVIDENCE — The failure this summer of a bill that would have relaxed parts of the state fire code to make life easier for businesses disappointed Governor Carcieri and some key legislators, who had crafted the bill after several public hearings. Now many elements of the bill may become state policy without the General Assembly.

The governor and key legislators agree on a plan to implement many of the proposed changes through state regulations overseen by the fire marshal's office, the Fire Safety Code Board of Appeal and Review and the state Department of Labor and Training. The governor's office is working with those agencies "to move forward with some of these updates" to the fire code, said Carcieri

SEE **CODE, B3**



AP / ALI ABBAS

## U.S. awaits his opinion on Iraq war

Both President Bush and Congress are relying on an honest assessment from Gen. David Petraeus.

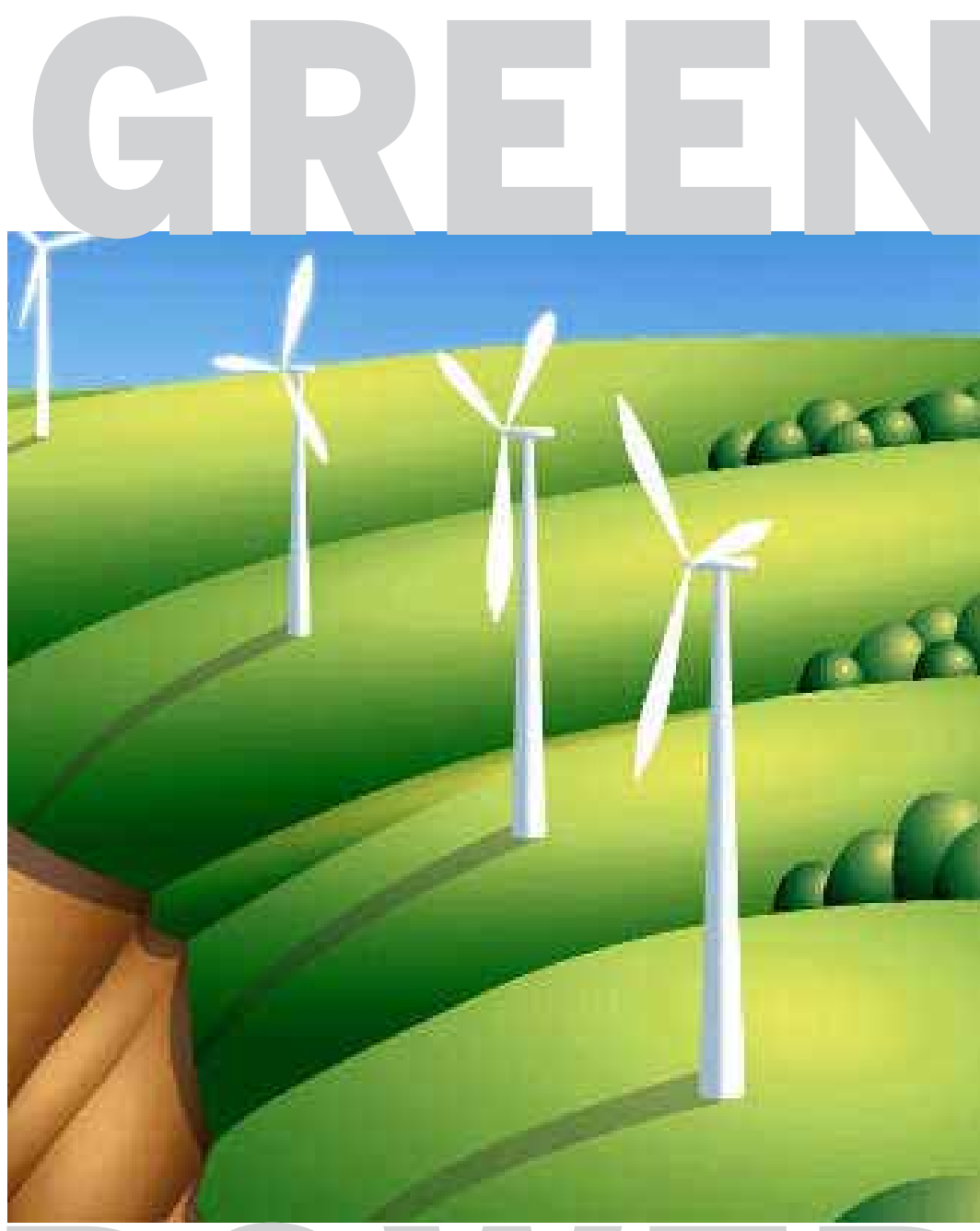
BY JOHN F. BURNS  
THE NEW YORK TIMES

BAGHDAD, Iraq — Gen. David Petraeus looked out from the Black Hawk helicopter at the early evening vistas of Baghdad rushing by 150 feet below, pointing at bustling markets, amusement parks and soccer fields, scattered through neighborhoods where miles of concrete barriers stand like sentinels against the threat of suicide bombers.

Pressing the "talk" button on his headset, the slightly built 54-year-old general, the top American commander in Iraq, said glimpses of the normal life that have survived the war's

SEE **IRAQ, A5**

Gen. David Petraeus has said he wants the unvarnished truth from his subordinates.



# POWER

*Energy is all around us — in the wind, the waves, the sun. But such renewable sources supply only about 9 percent of our electricity. As fossil fuels get harder and more expensive to produce, conservation and renewable alternatives are increasingly important. This five-day series explores renewable energy in Rhode Island and ways to conserve energy while saving money.*

DAY 3

## R.I. coast rich with possibility for harnessing wind energy

BY MICHELLE J. LEE  
JOURNAL ENVIRONMENT WRITER

PORTSMOUTH

The white, 164-foot-tall windmill at Portsmouth Abbey School can be seen for miles, its blades slowly turning in the breeze like a large pinwheel.

Closer up, the gentle swooshing hum can be heard in the school parking lot and open pasture surrounding the turbine.

The 660-kilowatt Vestas turbine, the state's only utility-sized windmill, has been up for a little over a year, said Brother Joseph Byron, who jokingly refers to his work as the turbine's caretaker as another full-time job. Brother Byron, also drama teacher at the school, answers 10 phone calls a week about the turbine and has given 50 tours to school groups and other visitors.

The Portsmouth Abbey turbine serves as a model at a

time when public interest in wind energy seems to be gaining speed. In Rhode Island, 14 groups are in various stages of setting up wind-power committees and conducting feasibility studies.

The Rhode Island Wind Alliance, a coalition of 27 community groups, government agencies and businesses, was formed in December to promote wind energy and provide information on how to develop a large wind turbine, said Paul Sanroma, chairman of the alliance and Bristol Wind Power.

And a study commissioned by Governor Carcieri has identified 10 offshore and one land site as ideal for future wind farms — part of Carcieri's vision that the state generate 15 percent of its required electricity from renewable sources, mostly from wind.

The Portsmouth Abbey turbine cost about \$1.1 million to

erect, but the state paid for \$450,000 of that through a renewable energy grant from the Office of Energy Resources. Despite being reliant on the sporadic winds, the turbine produces nearly 40 percent of the school's electricity, in combination with energy-efficiency measures such as upgrading the school's boiler

and the lights in its dining hall, hockey rink, gym and auditorium.

"This is a real workhorse machine. ... I think it's beautiful," Byron said during a recent tour.

The turbine is sturdy with a 30-foot-thick concrete foundation, he said. During storms and extremely high winds, the windmill's blades turn at an angle and stop moving. The turbine also records the electricity it has made. During a recent tour, the counter read:

Demand is growing for large wind turbines, but that's not true of the smaller models.

Page E1

SEE **WIND, A2**

ILLUSTRATION BY TOM MURPHY / THE PROVIDENCE JOURNAL

**Your turn:** Would you use energy from alternative sources? To respond, and for more on the progress of renewable energy in Rhode Island, and ways you can conserve, go to [www.projo.com](http://www.projo.com) [projo.com](http://projo.com)

## Architect of Bush ascent, Rove, leaving White House

Credited with President Bush's victorious campaigns, and blamed in part for the 2006 GOP losses, the president's longtime confidant says "now is the time" to go.

BY JIM RUTENBERG  
and STEVEN LEE MYERS  
THE NEW YORK TIMES

CRAWFORD, Texas — With his voice breaking at times, and with President Bush at his side on the White House South Lawn, Karl Rove said yesterday that he would resign as a deputy White House chief of staff at the end of the month. The decision ends his role as the president's longest-serving and closest aide, and the one who most personified the bare-knuckle brand of politics Mr. Bush favors.

Rove was one of the last remaining senior members of the team that followed Mr. Bush from Texas to the White House in 2001. But increasingly he had to work with newcomers brought into the White House by the chief

of staff, Joshua B. Bolten, to help navigate a new era in which the White House has often had to seek accommodation with its political opponents — and Republican congressional allies — where it once was able to run past them.

Rove and Mr. Bush have a famously complicated relationship dating back to before Mr. Bush was governor, but it is nothing if not close. And the emotion was clear on Rove's face, and in his voice, as he and Mr. Bush faced reporters.

Rove cited a desire to "start thinking about the next chapter in our family's life." He said after 6½ intensive years of White House service, he owed it to his wife, Darby, and his college-bound son, Andrew, to return to civilian life. Mr. Bush patted him gently on the back before they walked to the presidential helicopter together, heading back to the state where their political odyssey began.

Rove said he first discussed his departure with the president last

SEE **ROVE, A6**



AP / CHARLES DHARAPAK

President Bush and his closest aide, Karl Rove, share an emotional moment after Rove's announcement yesterday.

## Product recalls can mean ruin in China

Both the Chinese government and individuals are resorting to extreme measures as exports suspected of being tainted come under greater scrutiny.

BY EDWARD CODY  
THE WASHINGTON POST

BEIJING — When Mattel Inc. recalled nearly a million toys manufactured by Zhang Shuhong's company, he fought hard to find a way to resume sales to the United States. They were the lifeblood of his company, Lee Der Industrial Co. Ltd., and its lucrative share of the export boom driving China's economic growth.

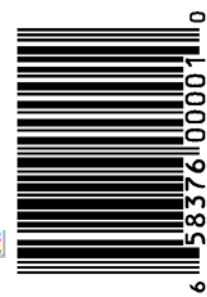
But as Zhang's factories in the southern city of Foshan lay idle, workers started drifting off, fearing they would never start up

again. Then Chinese authorities sealed Zhang's ruin by announcing Thursday that he was prohibited from exporting toys until further notice because of the defects denounced by Mattel.

Zhang was found dead in a company warehouse two days later, colleagues said yesterday, apparently having hanged himself in despair. His death dramatized the high stakes in an international scare over unsafe Chinese products and an increasingly vigorous government crackdown designed to restore confidence in the vital export industry.

"I think the company is about to go bankrupt," said an executive of a Lee Der subsidiary who identified himself only as Wang. "Otherwise, he wouldn't have committed suicide."

SEE **CHINA, A3**



### INSIDE TODAY

© 2007 Published daily since 1829  
6 SECTIONS

Ask Amy	F4	Lotteries	C4
Business	E1	Obituaries	D4
Classified	E10	People	F1
Comics	F5	Poker	F4
Crossword	F4	Rhode Island	B1
Editorial	B4	Sports	C1
Legal ads	E6	Television	F6
Lifebeat	F1	What's Happening	F4
Local News	D1		

### The Providence Journal SUMMERTIME FUND



Mail your donation to  
The Providence Journal  
Summertime Fund  
75 Fountain Street  
Providence, RI 02902

### GOING TO GRACELAND

Thousands are flocking to Graceland to mark the 30th anniversary of Elvis Presley's death, and a Coventry woman who once worked as his secretary will be there urging his fans to keep their appreciation in perspective. **F1**

### SOX BLANK DEVIL RAYS

Tim Wakefield limits Tampa Bay to two hits over eight innings as the Red Sox beat the Devil Rays, 3-0. **C1**



### PASSAGES: BROOKE ASTOR

The civic leader, philanthropist and grand dame of New York high society whose care became the source of a bitter family dispute dies in New York at 105. **B6**